

## Materico nodato



Nodato scuro MT-RNS



Nodato chiaro MT-RNC

## Materico essenza



Frassino oriente MT-FO



Rovere termocotto MT-RT



Rovere carbone MT-RC

## Materico poro aperto

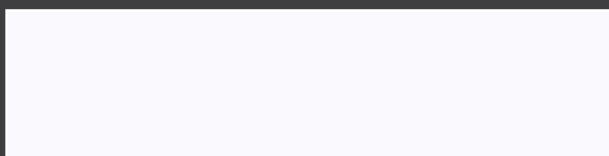


Bianco gesso MT-PA BG

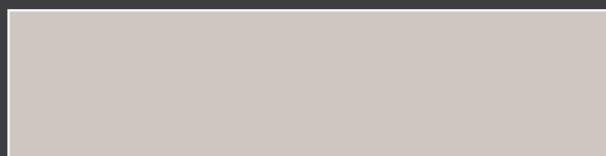


Madreperla MT-PA MP

## Materico opaco



Bianco gesso MT-OC BG



Madreperla MT-OC MP



Antracite MT-OC AN

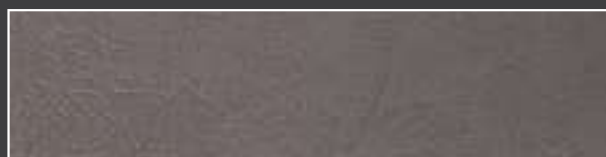


TOMASELLA

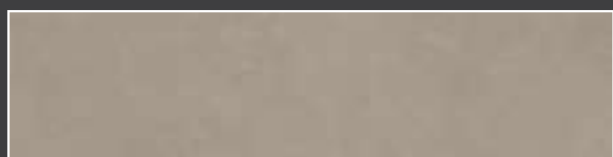
# Materico



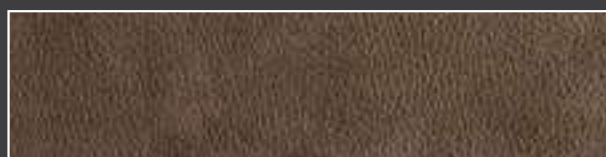
Cemento chiaro MT-CC



Cemento scuro MT-CS



Cemento cava MT-CV



Maya bronze MT-MB



Piasentina MT-PS



Graniglia MT-GR



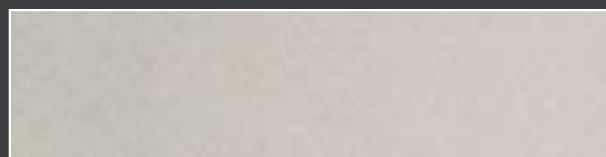
Paglia grigio MT-GR



Paglia bronzo MT-PB

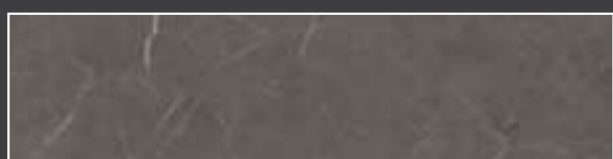


Intreccio scuro MT-INT S



Intreccio chiaro MT-INT C

# HPL



HPL scuro



HPL chiaro